

With the Tie Drill in position, the drills bore two holes simultaneously, one on each side of the track.

hoses which are long enough to reach spikes at either rail. The power plant is mounted on a frame equipped with a rubber tired wheel like a wheelbarrow for off-track movement. It has two ball bearing, double flanged rollers and outrigger for movement on the track. The power plant is a piston type hydraulic pump of the type used successfully for many years in the Nordberg Power Jack and Cribex. It is driven by a gasoline engine.

The new Nordberg Tie Drill was developed for both tie renewal work and out-of-face rail relaying operations. It bores two holes at once and its drills can be set to drill holes for rail spikes or for anchor spikes. It is adjustable to fit any tie plate and drilling is done through the tie plate holes. The particular tie plate setting desired is maintained by rollers riding the gage side of the rail.

The new Tie Drill is operated by one man who moves and spots the machine. It can drill 48 holes, covering the 24 ties per rail length, in 2½ minutes.

TWO NEW

"Mechanical Muscles"...

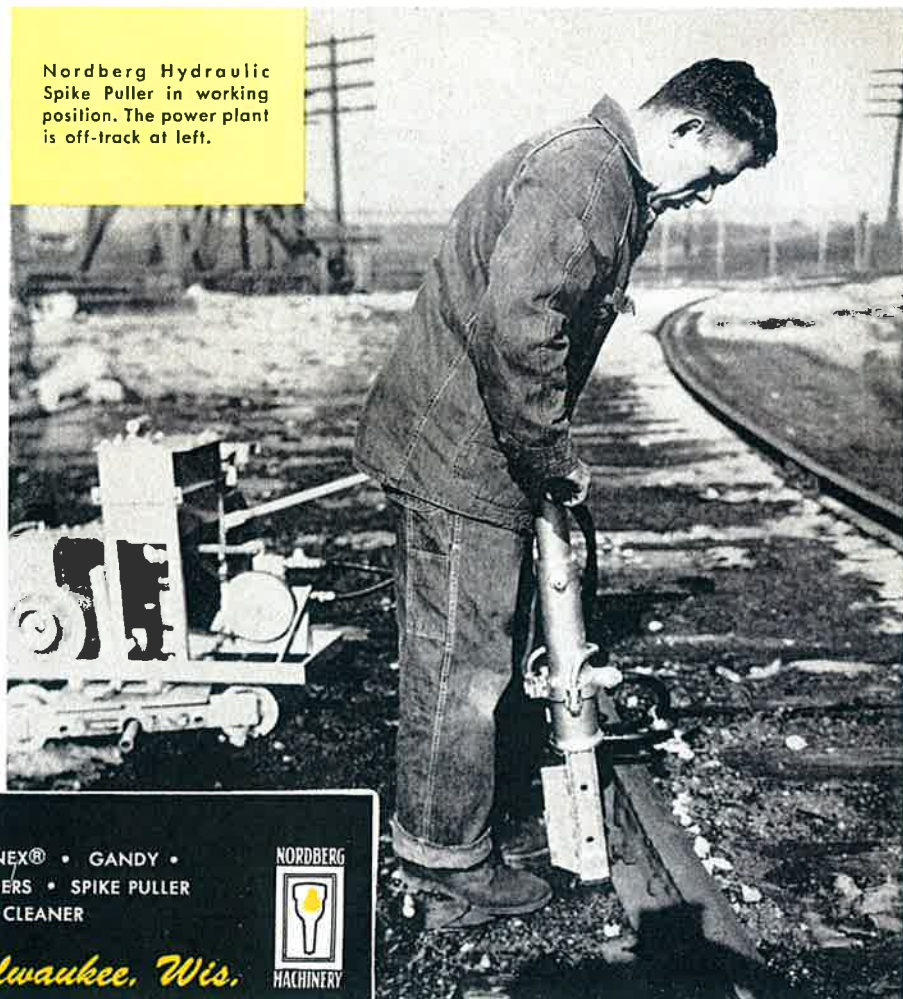
Hydraulic Spike Puller and Tie Drill designed for low cost track maintenance.

PRODUCTION of two new "mechanical muscles", the Hydraulic Spike Puller and Tie Drill, is announced by Nordberg as another step in this company's program to manufacture machinery to do a better, faster track maintenance job at lower cost.

The new Nordberg Hydraulic Spike Puller is a very simple and flexible machine designed for tie renewal work on all gage track. The spike pulling tool weighs 45 pounds and is a hydraulic ram with a claw that fits on the head of the spike. When the operator presses the valve trigger, the spike is pulled from track and automatically ejected from the claw. The claw then automatically returns to pulling position.

The pulling tool is connected to a power plant by flexible hydraulic

Nordberg Hydraulic Spike Puller in working position. The power plant is off-track at left.



ADJING MACHINE • CRIBEX® • BALLASTEX® • SCREENEX® • GANDY •
POWER JACK • POWER WRENCH • RAIL DRILL • RAIL GRINDERS • SPIKE PULLER
• TRAKGAGER • TRACK SHIFTER • DSL YARD CLEANER



NORDBERG MFG. CO., Milwaukee, Wis.