



# Product Support Bulletin 2005-005

245 W. Forest Hill Avenue  
Oak Creek, WI 53154

Contact: Gary D. Van Deluyster, Service Manager – Phone: 800-445-9258 – Fax: 414-766-2379

## Maintenance of Way ~ Work Equipment Bulletin

**DATE:** April 4, 2005

**SUBJECT:** Wing Lift Cylinder Pin Replacement Kit – 660057

**RATING:**  **DIRECTIVE**  
(Action is required)

**ALERT**  
(Potential Problem)

**INFORMATION**  
(Action is optional)

**PRODUCT IMPROVEMENT**  
(Enhance Product)

**MACHINE MODEL(S):** Model M Ballast Regulator

**SERIAL NUMBER(S):** All

**SUMMARY:** There have been reports of Wing Lift Cylinder Pins breaking during use. The break normally occurs in the area of the pin grease hole. To solve this problem, a new pin has been designed without a grease hole. A grease fitting is added to the Rod-end Clevis of the Wing Lift Cylinder (p/n7500-116) to lubricate the pin.

**OPERATIONAL IMPACT:** Replacing this pin will prevent downtime caused by failure of the original pin.

**ACTION:** The Wing Lift Cylinder Rod End Pin (B-4705-2) should be replaced with the new **Pin (p/n 700002)**. See Figure 1. The new pin is direct replacement for the original pin. However, the cylinder must be drilled to accept a **Grease Fitting (p/n 3801230)**. See Figure 2. The **Pin Field Replacement Kit (p/n 660057)** includes a Pin, Grease Fitting and clevis drilling instructions. Two kits are required per machine. The kit may be installed in about an hour.

**WARRANTY:** None



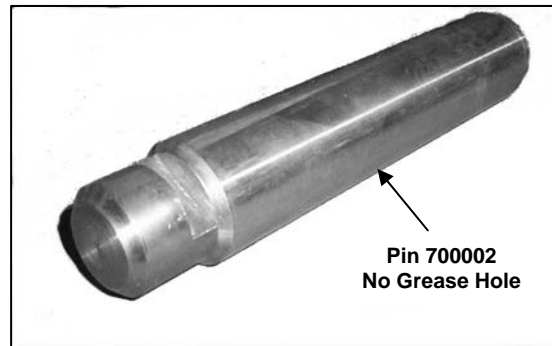


Figure 1

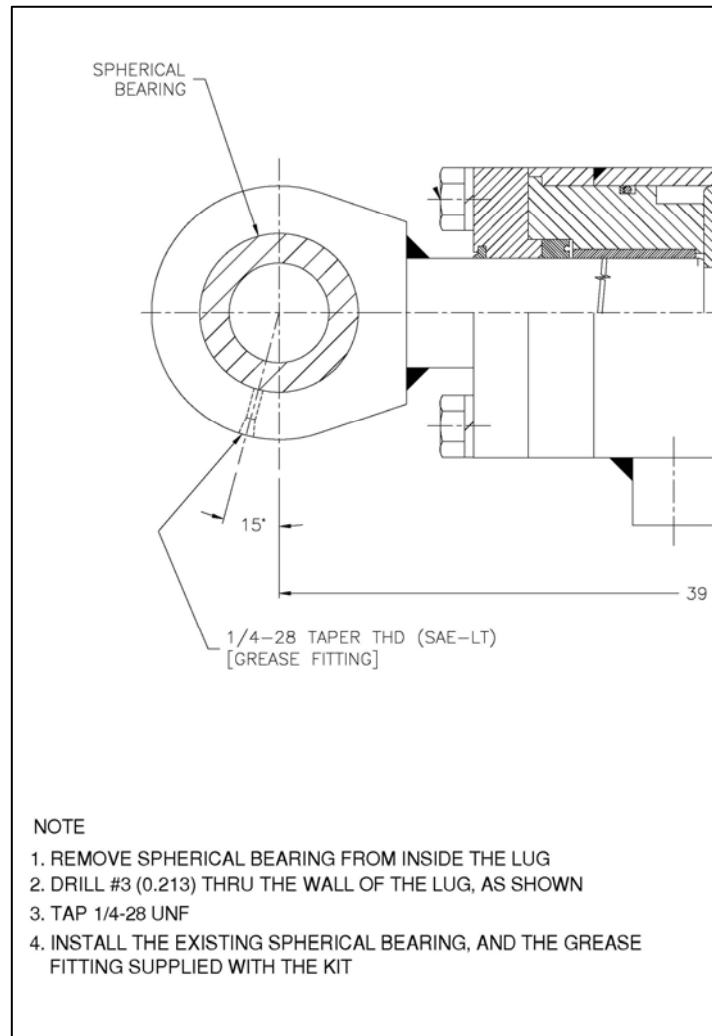


Figure 2