



Product Support Bulletin 2003-004

NORDCO Inc. 182 W. Oklahoma Avenue, Milwaukee, WI 53207

Contact: Gary D. Van Deluyster, Service Manager – Phone: 800-445-9258 – Fax: 414-769-2140

Maintenance of Way ~ Work Equipment Bulletin

DATE: February 25, 2003

SUBJECT: Chemical Gun Boom Support Reinforcement Kit – P/N 98510032

RATING:

<input checked="" type="checkbox"/> DIRECTIVE (Action is required)	<input type="checkbox"/> ALERT (Potential Problem)
<input type="checkbox"/> INFORMATION (Action is optional)	<input type="checkbox"/> PRODUCT IMPROVEMENT (Enhance Product)

MACHINE MODEL(S): NETP Tie Plugger

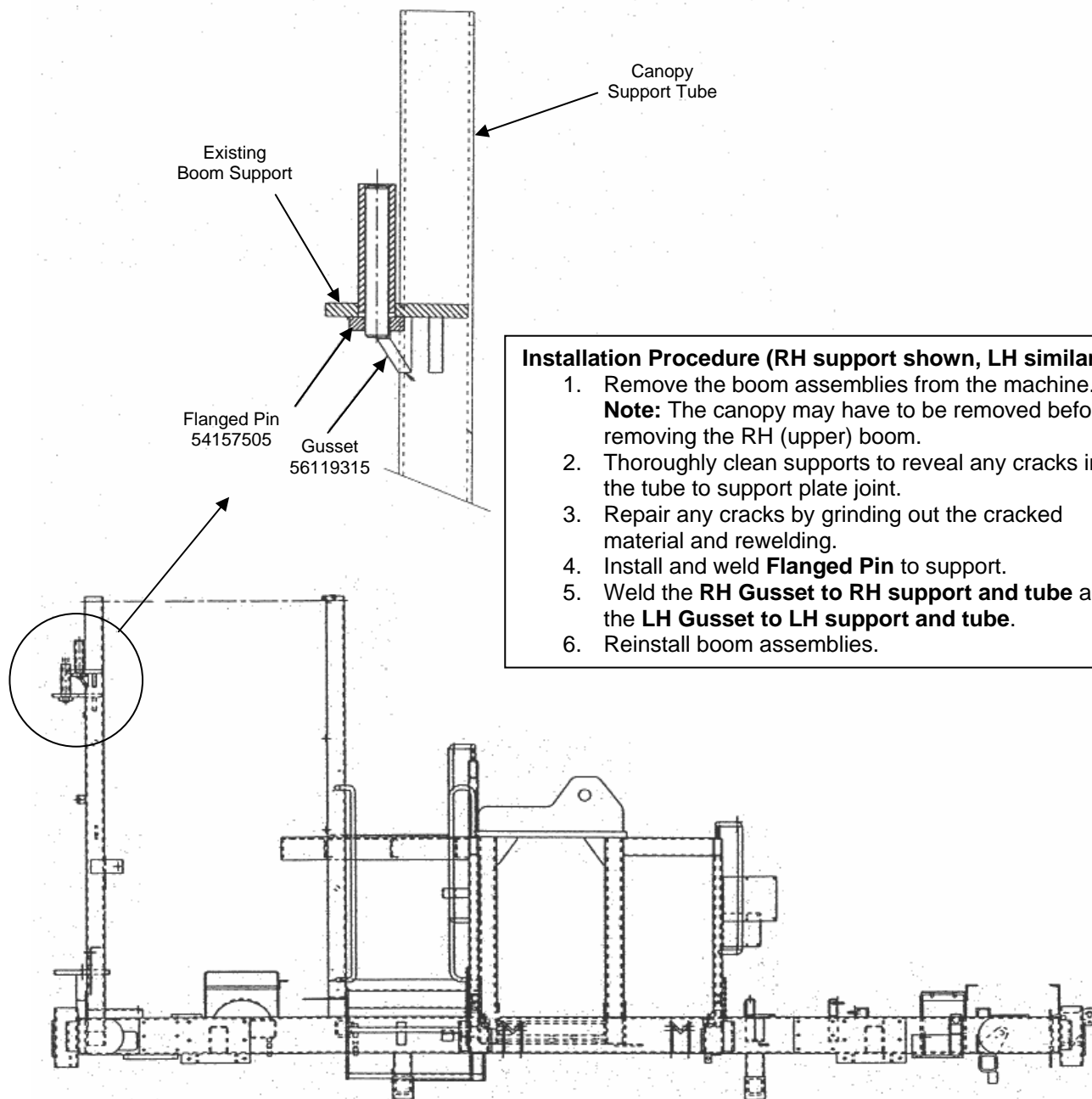
SERIAL NUMBER(S): 510001 - 510014

OPERATIONAL IMPACT: Reinforces the boom pivot support to help prevent weld failure of tube to support plate joint. This directive does not apply to machines s/n 510015 and above because the reinforcement kit is factory-installed on those machines.

ACTION: The kit consists of 2 **Boom Support Reinforcing Pins, p/n 54157505**, 1 **RH Gusset, p/n 56119315** and 1 **LH Gusset, p/n 56148200** and complete installation instructions. This installation requires some grinding and welding and removal of the Boom Assemblies. See Page 2.

WARRANTY: None, the kit may be ordered through the NORDCO Parts Department. Call 1-800-647-1724 to order.





Installation Procedure (RH support shown, LH similar)

1. Remove the boom assemblies from the machine.
Note: The canopy may have to be removed before removing the RH (upper) boom.
2. Thoroughly clean support to reveal any cracks in the tube to support plate joint.
3. Repair any cracks by grinding out the cracked material and rewelding.
4. Install and weld **Flanged Pin** to support.
5. Weld the **RH Gusset to RH support and tube** and the **LH Gusset to LH support and tube**.
6. Reinstall boom assemblies.

Machine Frame