

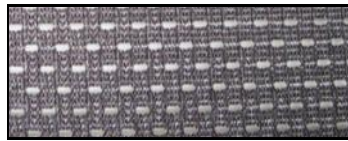
Nordco cab shades for any machine



DO THE WINDOW SHADES ON YOUR MACHINE LOOK LIKE THESE?

Improvised household shades from the hardware store and black plastic garbage bags aren't the answer when it comes to blocking heat and glare from the cab interior. Nordco offers polyester mesh and polyester film shades for all of our machines. They are durable, properly sized, and constructed to stand up to tough field conditions. **And now,**

Nordco polyester mesh shades are available for ANY machine, regardless of the manufacturer, *provided there is a minimum 1-1/2" clearance around the outside of the window frame.* Poly mesh shades are encased in a powder-coated steel housing with a heavy duty recoil spring. **Contact Nordco Parts at the phone number or email below for a quotation or more information.**



Left: Nordco Poly Mesh Cab Shade.
Above: Transparent mesh fabric makes it possible to see outside the cab when shades are in down position.

Featured Product: Spike Feed Warm-Up Kit

Part number: 98410320

Machine: CX Hammer and Model C Spikers, all serial numbers

What it does: Helps ensure proper operation of spike feed cylinder in extreme cold by allowing a small flow of heated oil to the hydraulic line connected to the cylinder each time it is activated. Operates automatically; no activation required. One kit per machine. For single side of machine, order 98410319 SPIKE FEED WARM UP KIT ONE SIDE.

Description: Kit includes the following components, plus hardware and installation instructions.

QTY	NORDCO P/N	DESCRIPTION
2	HE04060JCJC1BCX	HOSE, 1/4 X 60
2	HE04080JCJC1BCX	HOSE, 1/4 x 80
4	24709012	HOSE CLAMP
4	24709194	HOSE CLAMP
4	1605410	ORIFICE,-06 FLARE
6	1958041	TEE,SWIVEL RUN .562-18
2	1958050	TEE,SWIVEL RUN .750-16
8	1955140	SWIVEL ELBOW .562-18
2	1997210	REDUCER

98410320 Spike Feed Warm-Up Kit.



CX Hammer.

Go to the MOW Parts section at www.nordco.com for a searchable list of machine repair and upgrade kits and exchange components.



NEW FROM NORDCO

Featured Product: Workhead Wearpad Upgrade Kit

Part number: 98760295

Machine: TRIPP Tie Exchanger
All serial numbers

What it does: New design workhead wearpads are constructed of durable, non-metallic self-lubricating material. Longer material life means less frequent maintenance.

Description: The kit includes quantity 4 of 76301144 TIE EXCHANGER FRAME WEAR PAD and mounting hardware. One kit required per machine.



Nordco TRIPP.



98760295 Workhead Wearpad Upgrade Kit installed on TRIPP frame.

Featured Exchange and Rebuilt Component: AA2R Main Workhead Exchange

Part number: 90650025

Machine: AA2R Anchor Adjuster 2-Rail
All serial numbers

Complete, pre-assembled AA2R workhead for one side of the machine. Change-out an entire workhead in one step.



Nordco AA2R.



90650025 AA2R Main Workhead Exchange.

The Nordco Exchange Component Program

Nordco offers an extensive selection of Exchange Components for our Maintenance-of-Way Machinery. Send in your old unit, and Nordco provides a like-new, fully warranted refurbished and upgraded component, ready for installation. Contact Nordco for a complete list of exchange components, or visit our website at www.nordco.com

Featured Product: Squeeze Cylinder Kit

Complete tamper squeeze cylinder assembly. For field repairs or machines brought in to the shop for maintenance.

Part number: JX68297-KIT

Machine: MKI, MKII, MKIII & MKIV Tamper

Kit includes one JX68297 SQUEEZE CYLINDER, and quantity 2 of JC5405X6 90 DEG. MALE ELBOW and JZ682674 SQUEEZE CYLINDER SPACER. Also includes installation hardware.

JX68297-KIT Squeeze Cylinder Kit.



Contact Nordco Aftermarket Parts Sales & Service

Ph: 1-800-647-1724 7:30 a.m. - 5 p.m. Central Time Monday - Friday Fax: 414-766-2379 Email: Parts_Sales@nordco.com
Request an order or quotation: www.nordco.com Nordco Inc. 245 W. Forest Hill Ave. Oak Creek, Wisconsin 53154 USA