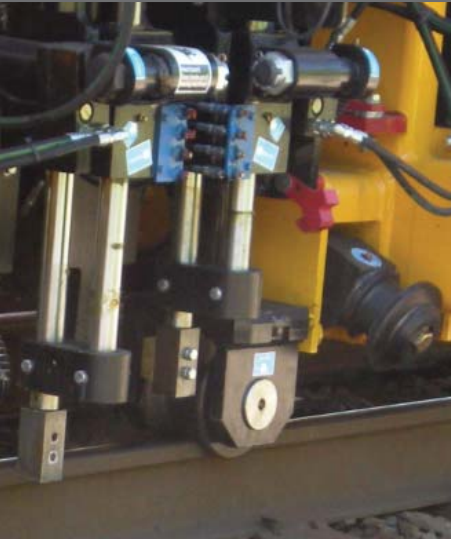


AK67 - Anchor Remover



Use your smartphone to scan this code for more information.



Key Features

The AK67 - Anchor Remover includes the following key features:

- Enclosed dual-operator, climate-controlled cab; extended cab available (with seating for up to eight people)
- Dual workheads; pusher/scrapper assembly over each rail
- Optional workhead tools - rail manipulator and insulator stomper - for concrete sleepers available
- Cab-controlled workhead power lock-ups
- John Deere Tier III diesel engine
- Four-wheel, dual-axle, chain and sprocket propulsion system
- 24 VDC, circuit breaker-protected, electrical system
- Spring-applied, hydraulic-released brakes, with Cobra brake shoes
- Positive locking turntable with steel base
- Back-up alarm, switchable for travel direction

Handle anchoring systems for wood ties and concrete sleepers.

The enclosed cab keeps operators protected from environmental conditions. The back desk allows extensive storage space for supplies.

Quickly adjust to different working conditions

Make simple adjustments - from inside the cab - to adapt the positions of the pusher and scraper for different rail base widths. Or quickly set the proximity switches to adjust the workhead to handle different rail heights. In addition, easily switch between settings for welded or jointed rail. Using Fair anchors? Simply adjust the scraper to accommodate this anchor style.

Use fewer personnel carriers

The optional extended cab allows up to six extra crew members (total capacity = 8) to ride in the cab. Fewer personnel carriers mean less equipment to maintain and less space needed on sidings for overnight storage.

Robust removal force

The AK67 has robust pushing and scraping forces to ensure that anchors are removed smoothly and cleanly:

- 12,250 foot-pounds of pushing force
- 5000 foot-pounds of scraping force

Work with wood or concrete ties

Optional rail manipulator and insulator stomper tools easily convert the AK67 for use with concrete sleepers.

Lower cost of ownership

The AK67 uses many of the same components as other Nordco machines, so you can stock fewer maintenance parts on your parts wagon.

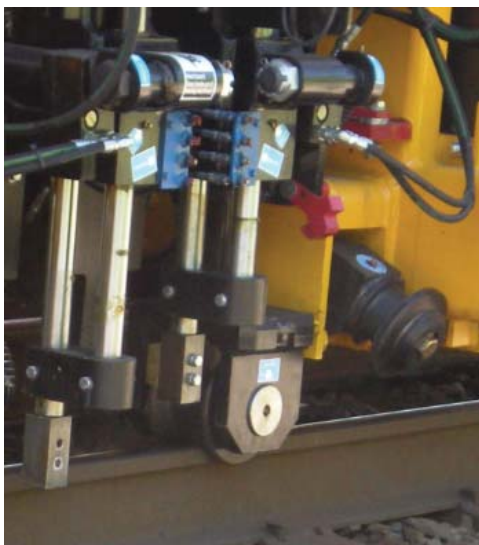
Select between automatic or manual modes

Use the auto cycle mode to automatically spread anchors at a pre-determined height or, when necessary, easily switch to manual mode to precisely lower the workhead to the desired height for the situation.





Ergonomic operator seating keeps operators comfortable and productive through long shifts. Extended cab option allows seating for up to eight people.



The pusher and scraper tools work in unison to remove anchors cleanly and completely.

Ask us about...

Rebuild Programs

Are your maintenance-of-way machines getting older and less reliable? Nordco can rebuild virtually all maintenance-of-way equipment, regardless of original manufacturer, restoring your machines to like-new status.

Component Exchange Programs

Do you only need a replacement component, such as a workhead or axle, for your maintenance-of-way machine? You can order new or rebuilt components to be delivered directly to your shop or field operations.

Trade-In Programs

Interested in purchasing a new maintenance-of-way machine, but wondering what to do with your existing equipment? In many cases, you can trade in your current equipment for credit towards a new machine.

Rental Programs

Have a short-term need for a particular maintenance-of-way machine? Check our website for a current list of available rental equipment.

Parts Availability

Need parts for your maintenance-of-way machine? Contact our part experts at 1-800-647-1724, Monday through Friday, 7:30 a.m. to 5:00 p.m. US Central Time.

Want to ensure that you order the most essential parts to keep your maintenance-of-way machine operational? Check our website or ask your parts sales representative about the available critical component kits and basic spare part kits for your machine.

Not sure what parts to order for preventive maintenance or winterization? You'll find a large range of kits available - check our website or ask your parts sales representative.

Optional Equipment

Category	Option Type	Description
Cab	Cab accessories	Extended cab, cab pressurizer, cab window shades , air conditioner, window vandal guards
Workheads	Concrete sleeper accessories	Rail manipulator, insulator stomper
Repair & Maintenance	Corner-mounted jackstands	Lifts the unit to allow under-machine repairs
	Electric hydraulic tank fill system	Allows quick filling of hydraulic tank
	Spare hose tree	Stores extra hoses on the machine
	Remote coolant filter loops / Remote fluid drains	Allows quick filter/fluid maintenance
	Schroeder KF 30 case drain return filtration	Filters oil to remove engine wear-related metal filings
	Electric emergency pump	Allows workhead to be moved if engine fails
Cold Weather	Machine heaters	110-volt engine and oil pan heater, hydraulic warm-up valves, winter operation Espar heater for engine and hydraulic tank
	Cab heater	Espar heater for cab
Other Accessories	Gauges and alarms	Fuel level site gauge, speedometer, hydraulic reservoir temperature gauge, low hydraulic oil/high hydraulic oil temperature alarm, turntable warning light and buzzer
	Lighting and mirrors	Heated outside mirrors and perimeter lighting package
	Storage	Additional book storage box, operator belongings box, track tool box
	Miscellaneous	"Danger Live Track" retractable belt, DOT reflective tape, extra parts/operations/maintenance manuals, rail sweeps, tow bar with D-handle hitch pins, windshield washer fluid tank and nozzles

Product Specifications

Category	Specification	Value
General	Weight	28,900 lbs
	Length	25' 8"
	Width	8' 6"
	Height	9' 10"
	Wheel base	11'
	Travel/towing speeds	25 mph (maximum) - travel; 20 mph (maximum) - towing
Capacities	Fuel tank	120 gallons
	Hydraulic tank	115 gallons
Engine	Make/Model	John Deere 4045H
	Type	Four-cycle diesel
Hydraulic System	Make/Model	Vicker PVM131
	Type	Piston pump
Electrical System	Battery	24 Vdc (dual 12V DC batteries), 1150 cold-cranking amps
Axle Drive System	Drive type	Four-wheel with dual-axle chain drive
	Propulsion type	Hydraulic
Brakes	Type	Spring-applied/hydraulically released
	Style	Four-wheel Cobra-style

www.nordco.com

245 W. Forest Hill Avenue
Oak Creek, WI 53154 USA
Phone: 414-766-2180
Fax: 414-766-2379

