

# NSCA - Spring Clip Applicator



## Key Features

The NSCA - Spring Clip Applicator includes the following key features:

- Dual-operator, fully enclosed, climate-controlled cab with superior visibility
- Two workheads, one over each rail; two guns per workhead, four guns total; fully adjustable for different rail heights
- Soap sprayer nozzle to lubricate clips during application
- John Deere Tier II diesel engine; Cummins engine option available
- 24 VDC, circuit breaker-protected, electrical system
- Cobra brake shoes
- Four-wheel, dual-axle, chain-driven propulsion system
- Cab-controlled workhead power lock-ups
- Single, pressure-compensated, hydraulic pump
- Integrated, positive locking, rail-to-rail turntable
- Top-off pump
- Joystick controls

*Easily set workheads for different rail heights, base widths & hole locations.*



NSCA - Spring Clip Applicator

## Adjust to different working conditions

- Simply move clips on the guide rods to set the workhead descend level for different rail heights.
- Set the workheads to handle different base widths for accurate clip insertion placement.
- Quickly reverse direction on the track using the integrated turntable.

## High production levels

The NSCA is ideal for both tie and rail high-production gangs. Use the dual-workhead mode to efficiently operate both the inside and outside workhead guns simultaneously. In addition, four workhead guns allow you to rapidly install all four clips at the same time.

## Automatic clip lubrication

Integrated soap sprayer nozzles on each workhead automatically lubricate clips during application to ensure fast placement and attachment.

## Operator comfort and ergonomics

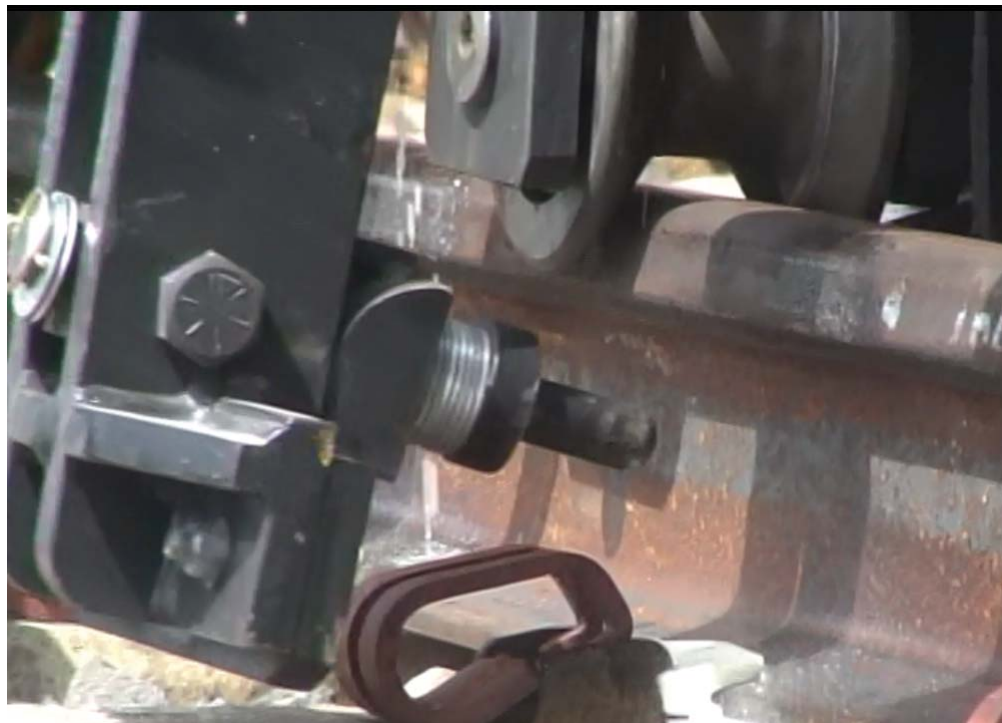
The fully enclosed, climate-controlled (heat and air conditioning) provide excellent four-season operator comfort. Window placement is designed to provide excellent visibility of the work area as well as the track ahead. Finally, joystick controls make workhead movement easy and intuitive.



Use your smartphone to scan this code for more information.

## Product Specifications

Category	Specification	Value
<b>General</b>	Weight	18,000 lbs
	Length	20' 8"
	Width	8' 6"
	Height	10' 6"
	Wheel base	9'
	Travel speed	20 mph (maximum)
<b>Capacities</b>	Fuel tank	35 gallons
	Hydraulic tank	98 gallons
<b>Engine</b>	Make/Model	John Deere 4045T, Tier II (Cummins B4.5T available)
	Type	Four-cylinder, four-stroke
<b>Hydraulic System</b>	Make/Model	Vickers PVM98 series
	Type	Vickers manifold
<b>Electrical System</b>	Battery	24 Vdc (dual 12V DC batteries), 1150 cold-cranking amps
<b>Axle Drive System</b>	Drive and propulsion type	Four-wheel, two solid axles, hydraulic chain drive
<b>Brakes</b>	Type/Style	Spring-applied/hydraulically released, four-wheel Cobra-style



[www.nordco.com](http://www.nordco.com)

245 W. Forest Hill Avenue  
 Oak Creek, WI 53154 USA  
 Phone: 414-766-2180  
 Fax: 414-766-2379

