



Product Support Bulletin 2018-001A

245 W. Forest Hill Avenue
Oak Creek, WI 53154

Contact: Technical Support Phone: 800-445-9258 or Email: TechSupport@Nordco.com

Maintenance of Way ~ Work Equipment Bulletin NOTE – THIS BULLETIN REPLACES BULLETIN 2018-001

DATE: 22, February 2019

SUBJECT: Replacement of the **Eaton ADY-098** (series 620) Model Main Hydraulic Pump with a **Danfoss** (series 45) Model Main Hydraulic Pump

RATING:	<input type="checkbox"/> DIRECTIVE (Action is required)	<input type="checkbox"/> ALERT (Potential Problem)
	<input type="checkbox"/> INFORMATION (Action is optional)	<input checked="" type="checkbox"/> PRODUCT IMPROVEMENT (Enhance Product)

**MACHINE
MODEL(S):**

CX Platform

CX Hammer (up to 411161)
CX Hammer RB-UG & REMAN
Nipper-Clipper
NVCAR-N

SP2R Platform

AA2R
NSCA
NVCAR
RPI
Screw Remover - Model B (up to 130402)
SP2R (up to 310609)

SERIAL NUMBER(S): All, as noted above with serial number range where applicable.

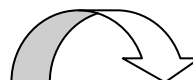
SUMMARY: The **Eaton ADY-098** (series 620) pumps used on the above machines are being replaced by **Danfoss** (series 45) pumps on all new machines. Any future orders for **ADY-098** pumps will require a kit to replace it. (This also applies to any obsolete **Vickers PVH-098** or **PVM-098** pumps that may still be installed on the machines.) The complete kits for each Platform are noted below. The complete kit includes everything needed to replace the original pump. There is also a kit for just the hardware, fittings and hoses but no pump. Finally the pump only part number is provided which will be the same for both machines.

CX Platform

Complete Kit p/n 98417961
Kit w/o Pump p/n 98417962
Pump only p/n 59428104

SP2R Platform

Complete Kit p/n 98317961
Kit w/o Pump p/n 98317962
Pump only p/n 59428104



NORDCO Product Support Bulletin 2018-001A

OPERATIONAL IMPACT: The **Danfoss** (series 45) pumps are NOT directly interchangeable with the **ADY-098** (series 620), or the obsolete **Vickers PVH-098** and older **PVM-098** pumps. The **Danfoss** pumps use a different outlet ball valve, destroke valve configuration and the case drain line is larger than what was used on the **Vickers PVH-098** and **PVM-098** pumps.

ACTION: A complete kit is available for each Platform. The complete kit includes a pump, outlet ball valve, hoses, fittings and all necessary hardware required to perform the pump change out. All electrical connections will remain the same. Please see the following **Figures 1-3** on page 3 of past and current pump configurations installed on your machines.

The new **Danfoss** (series 45) pump uses a code 62 flange connection on the outlet. This requires replacing the outlet ball valve.

On the CX Platform machines you will also have to replace the pressure hose that includes JIC ends. You will also have to replace the existing suction fitting to a 45° elbow so the pump can be rotated 90° to allow the case drain line to exit out of the top of the pump. See **Figure 4** on page 3.

On older machines that are still equipped with a **Vickers PVH-098** or **PVM-098** pump, the existing 1/2" case drain line hose will have to be replaced with a 1" hose.

You will need to confirm first that your machine has not had the pump changed out before placing any order. The chart is shown again below to assist in ordering the correct kit or just the pump. .

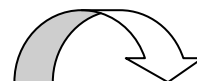
CX Platform

Complete Kit p/n 98417961
Kit w/o Pump p/n 98417962
Pump only p/n 59428104

SP2R Platform

Complete Kit p/n 98317961
Kit w/o Pump p/n 98317962
Pump only p/n 59428104

WARRANTY: None



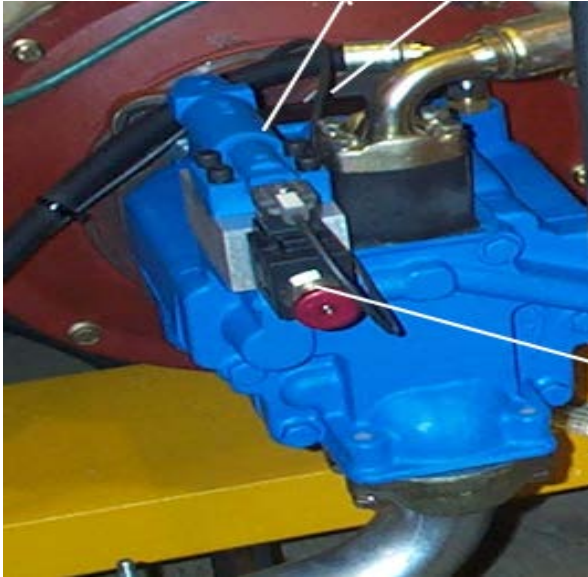


Figure 1
Obsolete PVH-098 pump on CX



Figure 2
Past PVM-098 pump on CX



Figure 3
Past ADY-098 pump on CX

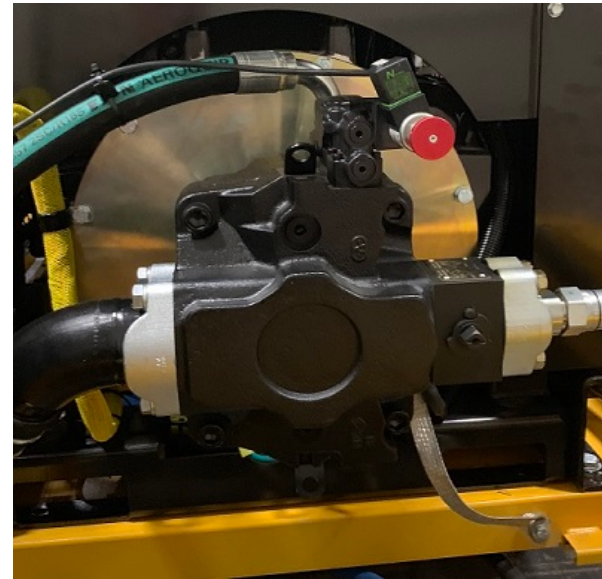


Figure 4
Current Danfoss pump (shown on CX)