

Visit Nordco at Railway Interchange 2013 Exhibition

If you are attending the Railway Interchange 2013 Exhibition in Indianapolis, make sure you visit Nordco at booth 2030. Nordco's exhibit will feature our Maintenance-of-Way products and services, with special emphasis on Tampers and Rail Flaw Detection. Representatives will also be on hand to tell you about our complete selection of aftermarket parts, kits and exchange components. This year's event takes place at the Indianapolis Convention Center September 29 - October 2.

Featured Exchange and Rebuilt Component: Gager Assembly

- Part number:** Various numbers, consult Nordco
- Used with:** Nordco Model C and CX Hammer Spikers
- What it does:** Complete change-out of Gager Assembly in a single step. Fully assembled, available for 12V and 24V machines, insulated and non-insulated bushings, with and without lockups.



90410598 24V Non-Insulated Gager Exchange, one of several configurations available from Nordco.

Here's how the Nordco Exchange Component Program works: You send Nordco your worn-out unit, and receive a completely refurbished and upgraded, like-new component with a full factory warranty. **Contact Nordco for information on our complete line of maintenance-of-way machinery exchange assemblies.**

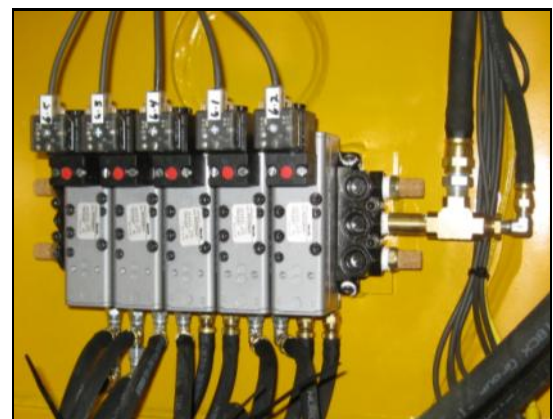
NEW FROM NORDCO

Featured Product: Air Manifold Upgrade Kit

- Part number:** 98760292
- Used with:** Nordco TRIPP Tie Exchanger
All serial numbers
- What it does:** Upgraded Air Manifold designed for longer life, particularly when operating in wet conditions. It features corrosion-resistant ceramic internal components instead of steel elements. Manifold design also helps keep water out.
- Description:** The kit includes one each of 50078376 AIR VALVE MANIFOLD and 56900055 AIR MANIFOLD MOUNTING PLATE. Mounting hardware also included.



Nordco TRIPP.



98760292 Air Manifold Upgrade Kit installed on machine.

Featured Product: Workhead Pin Kit

Includes complete selection of pins for Jackson 6700 Tamper Workhead

Part number: JS100506

Description: Includes the following components:

QTY	PART #	DESCRIPTION
2	J240373-2	SHAFT KIT WORKHEAD PIVOT
2	J240373-3	WORKHEAD PIVOT PIN
1	J216795-4,	TEARDROP PIN 6.37"
4	J216795-1	TEARDROP PIN 4.56"
1	J216799-2	TEARDROP PIN 6.43"
1	J114607-1	WORKHEAD LOCK HOOK PIN



For a complete list of machine kits, go to Maintenance-of-Way Parts at www.nordco.com and select [Search for Repair and Upgrade Kits](#)

When it comes to machine kits, there's always something new at Nordco

At Nordco, our work isn't done when a machine is delivered. We continually add to our line of aftermarket products that help keep your equipment up-to-date and in top working condition. Here's a recap of just a few of the Repair & Upgrade Kits rolled out the past 12 months.

WEAR PART, REPAIR & MAINTENANCE KITS

98350049 Claw Assembly Kit

Includes four claws and pins for SP2R and Grabber Spike Pullers.

98800053 24" Cobra Brake Shoe Kit

Ready-to-install brake shoe assembly for M7 Ballast Regulator/Snow Fighter and TRIPP Tie Exchanger. One kit per wheel. Includes brake shoe and brake head bracket.

68010090 Kent Hammer KF3 Service Kit

Key components commonly used to service KF3 Hammer on CX Hammer Spiker.

MACHINE UPGRADE KITS

98800039 M7 Valve Kit for M2-14 Ballast Regulator/Snow Fighter

Upgraded main hydraulic valves and related components offer improved performance in extreme weather conditions.

Shade Kits (various part numbers)

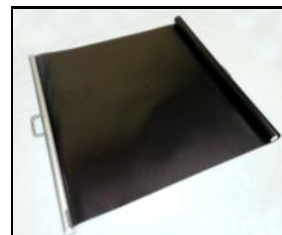
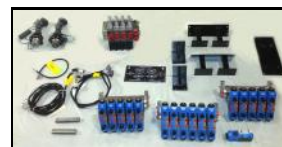
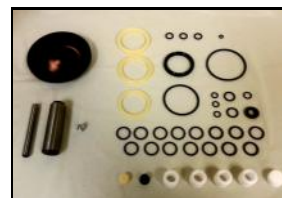
Nordco has introduced a selection of polyester film and polyester mesh window shade kits for all current production machines with cabs. Consult Nordco to determine the right kit for your machine.

98760136 Rail Lift Guide Kit

Brightly colored rods mount on both sides of the TRIPP Rail Lift Frame. This creates a visual point-of-reference so the operator can determine the position of frame when inserting or extracting ties.



Left: Rail Lift Guide Kit. From Top: Claw Assembly Kit, 24" Cobra Brake Shoe Kit, Kent Hammer KF3 Service Kit, Valve Kit for M2-14, Polyester film cab shade included in multiple shade kits.



Contact Nordco Aftermarket Parts Sales & Service

Ph: 1-800-647-1724 7:30 a.m. - 5 p.m. Central Time Monday - Friday Fax: 414-766-2379 Email: Parts_Sales@nordco.com
Request an order or quotation: www.nordco.com Nordco Inc. 245 W. Forest Hill Ave. Oak Creek, Wisconsin 53154 USA